

Monster Tracks

Unit 4 Lesson 4



clues



hints that help
solve a mystery or
problem

1. Context Clue

2. Apposition

3. Word Structure

4. Cognate

I looked for **clues**, or hints to help me solve the problem.



prehistoric



belonging to a
time before
people started
writing history

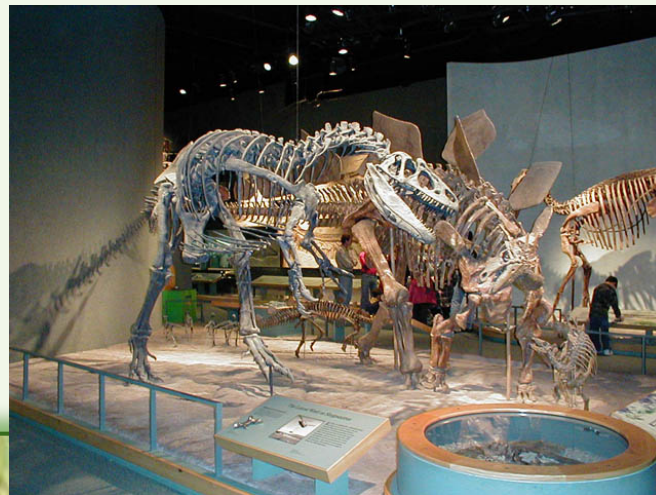
1. Context Clue

2. Apposition

3. Word Structure

4. Cognate

The dinosaur is a **prehistoric** animal. It lived before people recorded information or events.



imprint



to mark by applying
pressure

1. Context Clue

2. Apposition

3. Word Structure

4. Cognate

The rabbit's foot had made an **imprint** in the snow. You could clearly see its trail.



mold



a hollow form that material is poured into to make a shape

1. Context Clue

2. Apposition

3. Word Structure

4. Cognate

My grandmother uses a **mold**
to make cookies in the shape
of stars



shallow

not deep



1. Context Clue

2. Apposition

3. Word Structure

4. Cognate

The water at the shallow end of the pool came up to my knees. The water at the deep end was over my head.



textures

the different
looks and feel
of things



1. Context Clue

2. Apposition

3. Word Structure

4. Cognate

Sandpaper and some rocks
have rough **textures**.



