

Message by the Mile

Unit 5

Lesson 1

infrasonic

having a sound so low that
people cannot hear it



Sometimes animals can hear things
humans cannot.

conversations

exchanges of observations,
opinions, or ideas



melody

a series of musical tones

Musical score for a symphony orchestra, showing staves for Flutes (Fl. 1+2), Clarinets (Cl. 1+2), Bassoon (Fag. 1), Violin I, Violin II, Viola, Cello, and Contrabass (Cb.). The score is in common time (C) and features a tempo marking of $\text{♩} = 38$. The dynamic marking *ppp* (pianissimo) is present throughout. The Violin I and II parts include a tremolo (trem.) marking. The Viola part includes a tremolo (trem.) marking. The Cello part includes a tremolo (trem.) marking. The Contrabass part includes a marking *a2*.

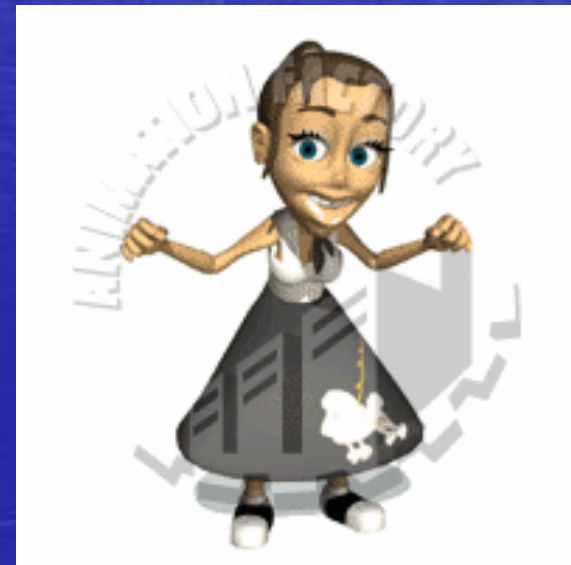


choruses

parts of a song that are repeated
after each verse

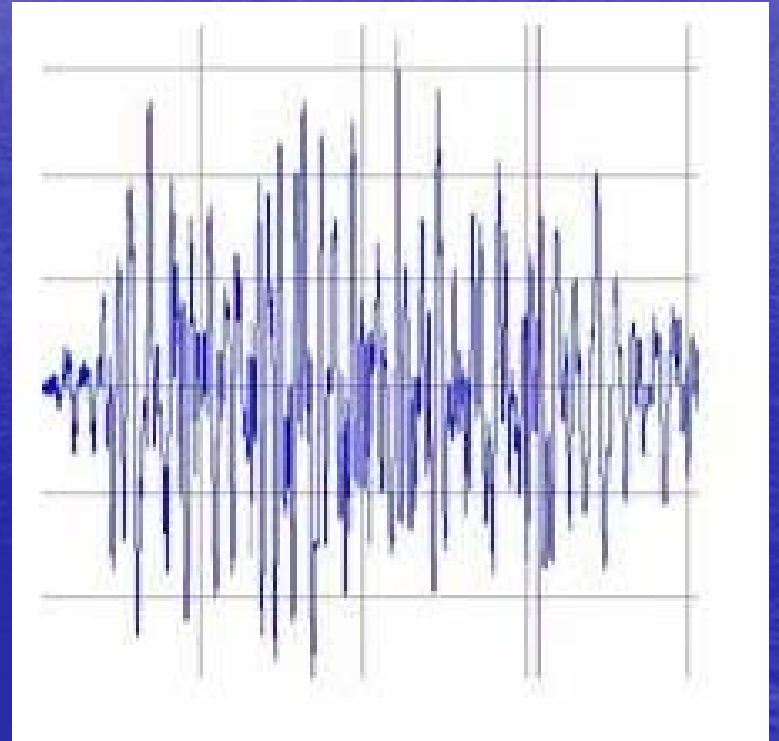
CHORUS: 

Ra-ma la-ma la-ma ka ding a da ding de dong
Shoo-bop sha wad-da wad-da yipp-it-y boom de boom
Chang chang chang-it-ty chang shoo-bop
Dip da-dip da-dip doo-wop da doo-bee doo
Boog-e-dy boog-e-dy boog-e-dy boog-ed-y
Shoo-by doo-wop she-bop
Sha-na-na-na-na-na-na yip-pit-y boom de boom
Ra-ma la-ma la-ma ka ding-a de ding de dong
Shoo-bop sha wad-da wad-da yipp-it-y boom de boom
Chang chang chang-it-ty chang shoo-bop
Dip da-dip da-dip doo-wop da doo-bee doo
Boog-e-dy boog-e-dy boog-e-dy boog-e-dy
shoo-by doo-wop she-bop
Sha-na-na-na-na-na-na yip-pit-ty boom de boom



vibrations

slight, rapid movements



complicated hard to understand

1. Solve the equation: $x^4 + x^3 - 2x^2 - 4x - 8 = 0$

2. Factor: $x^4 + x^3 - 2x^2 - 4x - 8 = (x - 2)(x + 2)(x^2 + x + 2)$

3. Therefore, $x^4 + x^3 - 2x^2 - 4x - 8 = 0$

$\rightarrow x - 2 = 0, x + 2 = 0, x^2 + x + 2 = 0$

4. $\alpha.$ $x^2 + x + 2 = 0$ ---- Using the quadratic formula

$$a = 1, b = 1, c = 2, x = \frac{-b + \sqrt{b^2 - 4ac}}{2a}, \frac{-b - \sqrt{b^2 - 4ac}}{2a}$$

Therefore, $x = \frac{1}{2}(-1 + \sqrt{7}i), \frac{1}{2}(-1 - \sqrt{7}i)$

$\beta.$ $x - 2 = 0, x + 2 = 0 \rightarrow x = -2, 2$



amplified
to make louder



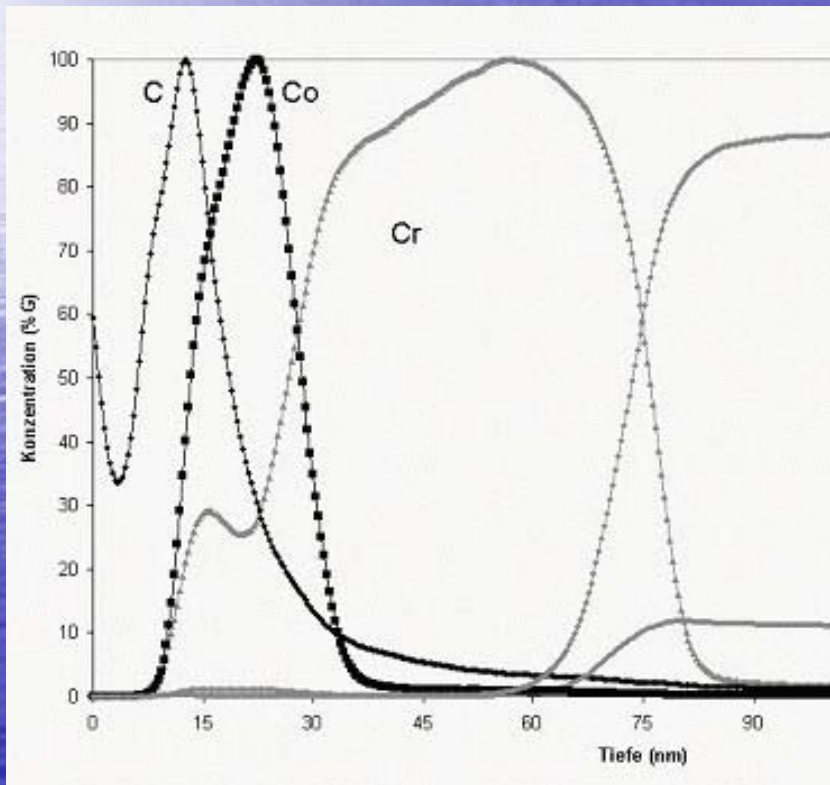
improvise

to make changes in a song as it is
being sung



registered

to show or record on a scale or meter



migrated

to move from one place to another

